



Napa Door

RESIDENTIAL DOOR SYSTEMS



Created with the goal of exceeding the expectations of discerning homeowners, Napa Door is proud to bring you the finest doors available in the market today...doors that make a statement that not only reflects their quality but your style.

We believe choosing stunning designs shouldn't mean sacrificing on quality. Nor should it mean enduring a premium price to obtain a premium product. So, whichever doors you choose, rest assured Napa Door will be the best part of

"Your Welcome Home"



Napa Door began with a vision – a vision to utilize the value of offshore production combined with American quality standards and expertise. Unlike so many overseas suppliers with empty promises and domestic suppliers who treat you as a number rather than a partner, Napa Door is dedicated to providing superlative products matched with definitive lead times to allow for effective ordering.

Started in 2008, Napa Door was formed by principals with decades of experience in the millwork industry. Propelled by the growing need for qualified sources in the market, Napa Door is leading the way to better quality, better service and better products.

specifications 3

exterior doors

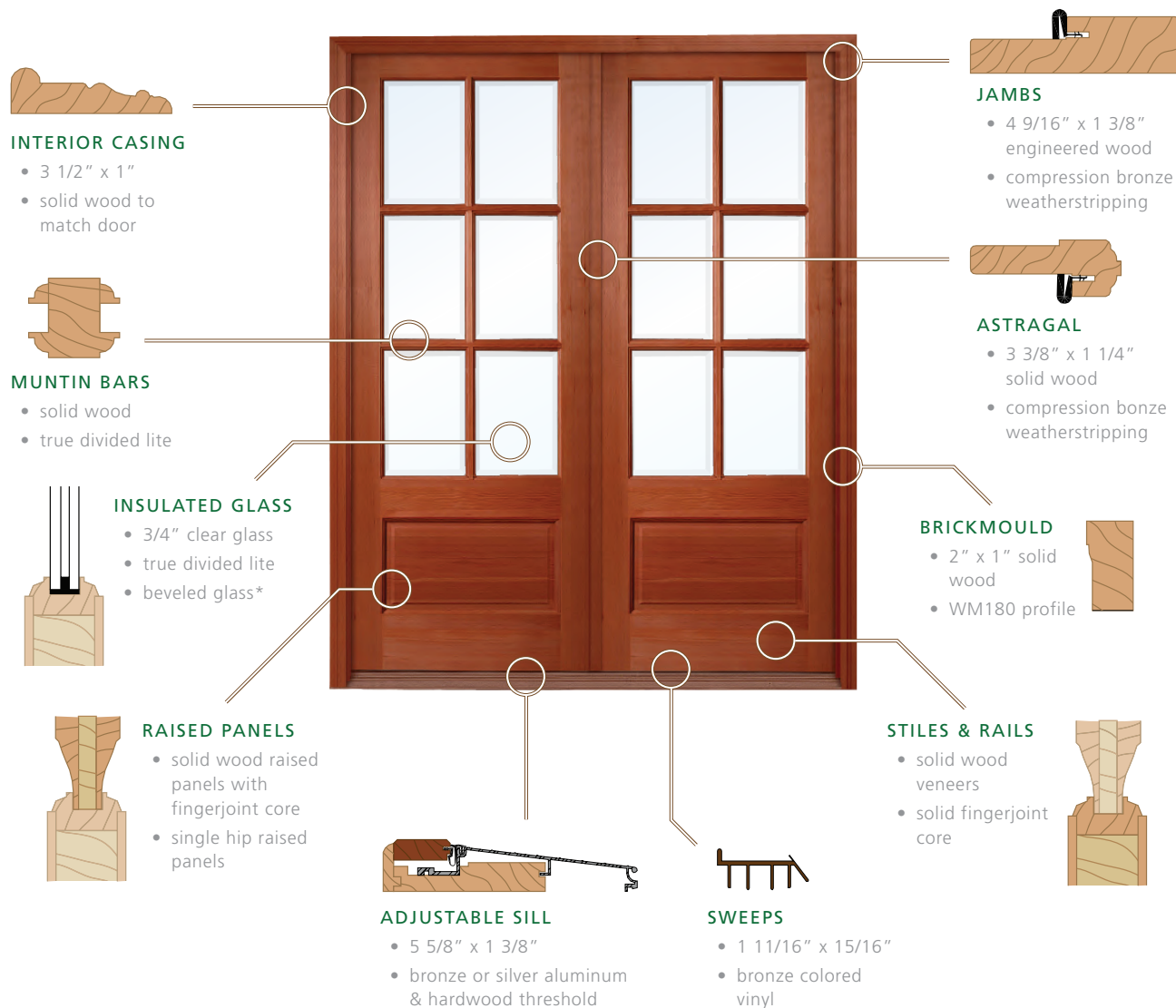
- sapele 4
- meranti 6
- meranti (premium) 8
- okoume10
- knotty alder11
- meranti (builder grade)12
- custom doors13

interior doors14

options & accessories15

EXTERIOR DOORS - STANDARD FEATURES

Engineered to maintain both their looks and integrity, Napa exterior doors provide the complete package. All configurations come pre-hung with matching bronze hardware in a system that ensures unit integrity, ease of installation and happy homeowners. In addition, options such as transoms, speakeasies, clavos and iron grilles* allow customers to customize units to fit their style. From top to bottom, Napa exterior doors are designed to make every opening an elegant entry.



EXTERIOR DOORS - OPTIONAL FEATURES*

- matching 1" x 4" outside trim (Sapele / Meranti / Okoume / Knotty Alder)
- beveled glass (Okoume)
- 3 lite rectangular transom (Sapele / Meranti / Okoume)
- raised moulding (Meranti / Okoume)
- speakeasies (Knotty Alder / Okoume)
- clavos (Knotty Alder / Okoume)
- iron grilles (Knotty Alder / Okoume)

**Some features may not be available on all models. Ask your sales representative for specific details.*

EXTERIOR DOORS - SAPELE

Sapele wood nearly always shows a pronounced interlocked grain which yields a beautifully regular stripe pattern when cut. It is also seen occasionally with wavy grain which will lead to a mottle or fiddleback patterns. As strong as Oak and with a medium to dark reddish-brown heartwood, Sapele will create a luxurious entryway for any home.



Arch Top Double:
1 panel, 6 lite

WIDTHS: 4/0, 5/0, 5/4, 6/0
HEIGHTS: 8/0



Arch Top Double:
1 panel, 4 lite

WIDTHS: 4/0, 5/0, 5/4, 6/0
HEIGHTS: 8/0



Arch Top Single:
1 panel, 6 lite

WIDTHS: 3/0
HEIGHTS: 8/0



Arch Top Single:
1 panel, 4 lite

WIDTHS: 3/0
HEIGHTS: 8/0



Arch Top Single:
**2 panel, 4 lite,
wide vertical mull**

WIDTHS: 3/6
HEIGHTS: 8/0



Square Top Double:
1 panel, 6 lite

WIDTHS: 5/0, 5/4, 6/0
HEIGHTS: 6/8, 8/0



Sidelite Door:
1 panel, 6 lite / 3 lite

WIDTHS: 1/0 - 3/0 - 1/0
HEIGHTS: 6/8, 8/0



Sidelite Door:
1 panel, 4 lite / 2 lite

WIDTHS: 1/0 - 3/0 - 1/0
HEIGHTS: 6/8, 8/0



Sidelite Door:
**1 panel, 9 lite / 3 lite
(prairie)**

WIDTHS: 1/0 - 3/0 - 1/0
HEIGHTS: 6/8

All Napa Doors are made utilizing sustainable harvesting techniques to ensure thriving forests and a healthier environment for generations to come.



Square Top Single:
1 panel, 4 lite

WIDTHS: 3/0
HEIGHTS: 6/8, 8/0



Square Top Single:
1 panel, 6 lite

WIDTHS: 3/0
HEIGHTS: 6/8, 8/0



Square Top Single:
6 panel

WIDTHS: 3/0
HEIGHTS: 6/8, 8/0



Sidelite Door:
1 lite (iron grille)

WIDTHS: 1/0 - 3/0 - 1/0
HEIGHTS: 6/8



Sidelite Door:
3 panel, 6 lite /
1 panel, 2 lite (craftsman)

WIDTHS: 1/0 - 3/0 - 1/0
HEIGHTS: 6/8



- 3/4" beveled glass standard on all lited units (clear flat glass available)
- one piece integral frames with 4 9/16" solid Sapele jambs
- 3 1/4" interior casing (Sapele)
- 5 5/8" bronze sill with adjustable threshold
- bronze weatherstrip and ball bearing hinges
- bronze flush bolts on double doors
- double bore with 2 3/8" backset, 5 1/2" on center
- pre-hung or KD

EXTERIOR DOORS - MERANTI

Soft brown in tone, Meranti most resembles a light Mahogany. The texture is beautifully broad and even with a grain that varies from straight to interlocked. Great durability, treatability and workability are hallmarks of Meranti – all of which allow for a stunning finished product and an elegant accent both inside and outside the home.



Arch Top Double:
1 panel, 6 lite
WIDTHS: 5/0, 5/4, 6/0
HEIGHTS: 8/0



Arch Top Single:
1 panel, 6 lite
WIDTHS: 3/0*
HEIGHTS: 8/0



Sidelite Door:
1 panel, 4 lite / 2 lite
WIDTHS: 1/0 - 3/0 - 1/0
HEIGHTS: 6/8, 8/0



Square Top Double:
1 panel, 4 lite
WIDTHS: 6/0
HEIGHTS: 6/8, 8/0



Square Top Double:
1 panel, 6 lite
WIDTHS: 6/0
HEIGHTS: 6/8, 8/0



Sidelite Door:
1 panel, 6 lite / 3 lite
WIDTHS: 1/0 - 3/0 - 1/0
HEIGHTS: 6/8, 8/0



Sidelite Door:
1 panel, 9 lite / 3 lite (prairie)
WIDTHS: 1/0 - 3/0 - 1/0
HEIGHTS: 6/8



Sidelite Door:
3 panel, 6 lite / 1 panel, 2 lite (craftsman)
WIDTHS: 1/0 - 3/0 - 1/0
HEIGHTS: 6/8

Napa Door is a leading supplier of quality door products. We continually strive to offer customers real and greater value few in the industry can match.



Square Top Single:
1 panel, 4 lite

WIDTHS: 3/0
HEIGHTS: 6/8, 8/0



Square Top Single:
1 panel, 6 lite

WIDTHS: 3/0
HEIGHTS: 6/8, 8/0



Sidelite Door:
1 lite (iron grille)

WIDTHS: 1/0 - 3/0 - 1/0
HEIGHTS: 6/8



- 3/4" beveled glass standard on all lited units (clear flat glass available)
- one piece integral frames with 4 9/16" solid Meranti jambs
- 3 1/4" interior casing (Meranti)
- 5 5/8" bronze sill with adjustable threshold
- bronze weatherstrip and ball bearing hinges
- bronze flush bolts on double doors
- double bore with 2 3/8" backset, 5 1/2" on center
- pre-hung or KD

EXTERIOR DOORS - MERANTI, PREMIUM SERIES

The soft brown tones of Meranti provide a perfect canvas for graceful decorative glass designs of the Premium Series. Great durability, treatability and workability are hallmarks of Meranti. So, whether paired with zinc or patina coming, Meranti's even texture and flowing grain patterns will enrich your entryway with warmth and style.

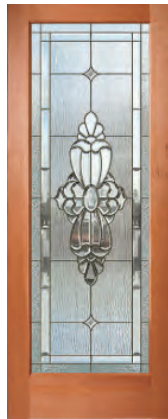


Square Top Single:
2 panel, 22x36
deco lite

WIDTHS: 3/0

HEIGHTS: 6/8

CAMING: ZINC, PATINA

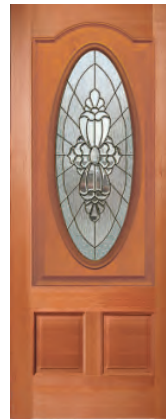


Square Top Single:
22x64
deco lite

WIDTHS: 3/0

HEIGHTS: 6/8

CAMING: ZINC, PATINA

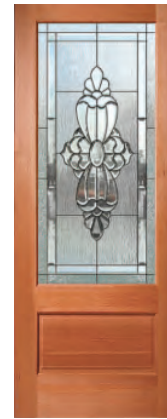


Square Top Single:
2 panel, 3/4 oval
deco lite

WIDTHS: 3/0

HEIGHTS: 6/8

CAMING: ZINC, PATINA



Square Top Single:
1 panel, 22x48
deco lite

WIDTHS: 3/0

HEIGHTS: 6/8

CAMING: ZINC, PATINA



Square Top Single:
2 panel, 22x36
radius deco lite

WIDTHS: 3/0

HEIGHTS: 6/8

CAMING: ZINC, PATINA



Square Top Single:
2 panel, Texas Star
deco lite

WIDTHS: 3/0

HEIGHTS: 6/8

CAMING: ZINC, PATINA



Square Top Single:
4 panel, fan
deco lite

WIDTHS: 3/0

HEIGHTS: 6/8

CAMING: ZINC, PATINA



Square Top Single:
6 panel

WIDTHS: 3/0

HEIGHTS: 6/8, 8/0

Vertically integrated operations enable Napa Door to manufacture and distribute competitively priced products with predictable delivery to a wide array of customers.



Square Top Single:
full oval
deco lite

WIDTHS: 3/0

HEIGHTS: 6/8

CAMING: ZINC, PATINA

caming

all Meranti, Premium Series decorative doors are available as either zinc (silver) or patina (black)



clear bevels

wave glass

granite glass



Square Top Single:
2 panel, arch top

WIDTHS: 3/0

HEIGHTS: 6/8, 8/0



- triple pane decorative IG glass
- 4 9/16" solid Meranti jambs
- 3 1/4" interior casing (Meranti)
- exterior brickmould (Meranti)
- 5 5/8" bronze sill with adjustable threshold
- bronze weatherstrip and ball bearing hinges
- double bore with 2 3/8" backset, 5 1/2" on center
- pre-hung or KD

EXTERIOR DOORS - OKOUME

Interlocked grain with a natural luster, Okoume presents with a pleasing pinkish-brown color. Beautiful patterns lend themselves to a variety of staining options to provide a truly enchanting entry.



Arch Top Double:
1 panel, 6 lite

WIDTHS: 5/0, 5/4, 6/0
HEIGHTS: 8/0



Sidelite Door:
1 panel, 6 lite / 3 lite

WIDTHS: 1/0 - 3/0 - 1/0
HEIGHTS: 6/8, 8/0



Square Top Double:
1 panel, 6 lite

WIDTHS: 5/0, 6/0
HEIGHTS: 6/8, 8/0



Sidelite Door:
1 panel, 9 lite / 3 lite
(prairie)

WIDTHS: 1/0 - 3/0 - 1/0
HEIGHTS: 6/8, 8/0

- 3/4" clear beveled IG glass standard
- 4 9/16" solid Okoume jambs
- 3 1/4" interior casing (Okoume)
- exterior brickmould (Okoume)
- 5 5/8" bronze sill with adjustable threshold
- bronze weatherstrip and ball bearing hinges
- bronze flush bolts on double doors
- double bore with 2 3/8" backset, 5 1/2" on center
- pre-hung or KD

EXTERIOR DOORS - KNOTTY ALDER

Knotty Alder has the strength of maple and the personality of pine. With light brown, yellow and peach color hues, stains further highlight the beautiful grain for the perfect rustic entryway.



Arch Top Double:
1 panel, V-groove plank, 6 lite

WIDTHS: 5/0, 5/4, 6/0

HEIGHTS: 8/0



Square Top Single:
2 panel arch, V-groove plank

WIDTHS: 3/0*

HEIGHTS: 8/0



Arch Top Single:
2 panel, V-groove plank

WIDTHS: 3/0*

HEIGHTS: 8/0



- 3/4" beveled glass standard on lited units (clear flat glass available)
- 4 9/16" solid Knotty Alder jambs
- 3 1/4" interior casing (Knotty Alder)
- exterior brickmould (Knotty Alder)
- 5 5/8" bronze sill with adjustable threshold
- bronze weatherstrip and ball bearing hinges
- double bore with 2 3/8" backset, 5 1/2" on center
- pre-hung or KD

**Door shown with optional speakeasy. Hinge straps, iron grille and clavos options are also available.*

EXTERIOR DOORS - MERANTI, BUILDER GRADE

The soft brown tones of Meranti combined with the zinc caming and designs of the Builder Series are a match that will elevate even a modest entryway to magnificent.



Square Top Single:
2 panel, 22x36
deco lite

WIDTHS: 3/0
HEIGHTS: 6/8
CAMING: ZINC



Square Top Single:
22x64
deco lite

WIDTHS: 3/0
HEIGHTS: 6/8
CAMING: ZINC



Square Top Single:
2 panel, 3/4 oval
deco lite

WIDTHS: 3/0
HEIGHTS: 6/8
CAMING: ZINC



Square Top Single:
4 panel, fan
deco lite

WIDTHS: 3/0
HEIGHTS: 6/8
CAMING: ZINC



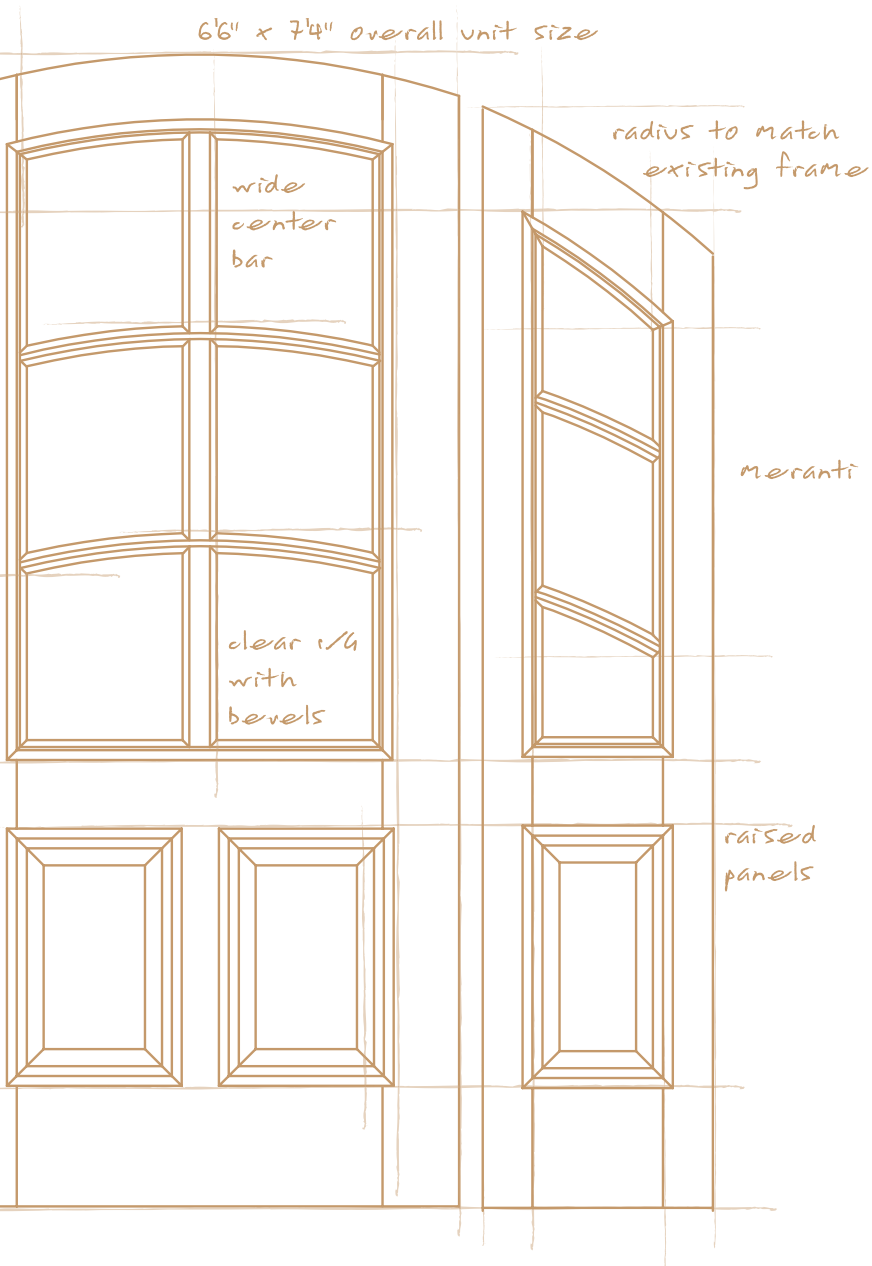
Square Top Single:
6 panel

WIDTHS: 3/0
HEIGHTS: 6/8

- triple pane decorative IG glass
- 4 9/16" fingerjoint primed jambs
- exterior brickmould (fingerjoint primed)
- 5 5/8" aluminum (silver) sill with adjustable threshold
- bronze weatherstrip
- zinc (silver) hinges
- double bore with 2 3/8" backset, 5 1/2" on center
- pre-hung or KD

EXTERIOR DOORS - CUSTOM

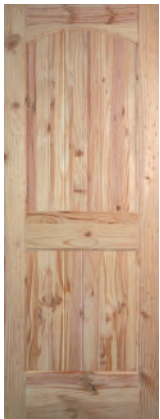
if you can draw it, we can build it! Turn your house into a custom home by creating a one-of-a-kind entry. We will work with you to turn your vision into a reality.



- choose from any species offered: Sapele, Meranti, Okoume, Knotty Alder or Fir
- frame depths available from 3 13/16" to 7 1/4"
- door thicknesses available from 1 3/4" to 2 1/4"
- custom profile interior casing and exterior trim available to match your door
- select from an array of hinge finishes, custom lock prep and fabrication
- pre-hung or KD

INTERIOR DOORS - FIR / KNOTTY ALDER

Choose Fir for a more traditional feel or Knotty Alder for rustic charm. Either way, superior construction combined with the warmth and feel of real wood will help make any house into a spectacular home.



**Square Top Single:
2 panel arch,
V-groove plank**

WIDTHS: 2/0, 2/4, 2/6,
2/8, 3/0

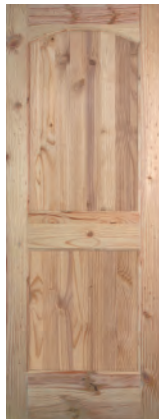
HEIGHTS: 6/8, 8/0



**Square Top Single:
2 panel,
V-groove plank**

WIDTHS: 2/0, 2/4, 2/6,
2/8, 3/0

HEIGHTS: 6/8, 8/0



**Square Top Single:
2 panel arch**

WIDTHS: 2/0, 2/4, 2/6,
2/8, 3/0

HEIGHTS: 6/8, 8/0



**Square Top Single:
2 panel**

WIDTHS: 2/0, 2/4, 2/6,
2/8, 3/0

HEIGHTS: 6/8, 8/0



**Square Top Single:
6 panel**

WIDTHS: 2/0, 2/4, 2/6,
2/8, 3/0

HEIGHTS: 6/8, 8/0



- 1 3/8" (Knotty Alder - shown) and 1 3/4" (Fir) slabs standard
- also available as KD or prehung with matching 4 9/16" flat jambs with stops
- other thicknesses and sizes available
- single hip profile raised panels
- solid wood veneer and engineered stiles and rails
- square edged
- unhandled, no bore

OPTIONS AND ACCESSORIES

Choose from an array of options and accessories to define a door for your home and your style.

RECTANGULAR TRANSOMS



WIDTH: 1/0 - 3/0 - 1/0
HEIGHT: 1/0 (standard)
1/2 (optional)
JAMBS: FJ PRIMED, SAPELE or MERANTI
GLASS: CLEAR BEVELED or CLEAR FLAT

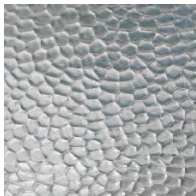


WIDTH: 1/0 - 3/0 - 1/0
HEIGHT: 1/0 (standard)
1/2 (optional)
JAMBS: FJ PRIMED or MERANTI
GLASS: DECO PATINA



WIDTH: 1/0 - 3/0 - 1/0
HEIGHT: 1/0 (standard)
1/2 (optional)
JAMBS: FJ PRIMED or MERANTI
GLASS: DECO ZINC

DOOR GLASS



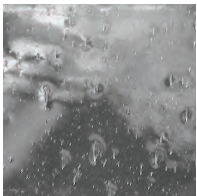
ARTIC



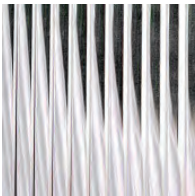
FROSTED



GLUE CHIP



SEEDY



REEDED



CLEAR LOW-E

REPLACEMENT INTERIOR CASING



SPECIES: SAPELE, MERANTI, OKOUME,
KNOTTY ALDER
LINEAL: 8/0 (STRAIGHT)
ARCH: 3/6, 4/0, 5/0, 5/4, 6/0

REPLACEMENT BRICKMOULD



SPECIES: SAPELE, MERANTI, OKOUME,
KNOTTY ALDER
LINEAL: 8/0 (STRAIGHT)
ARCH: 3/6, 4/0, 5/0, 5/4, 6/0

6 9/16" JAMB EXTENDERS



DOOR: SINGLE, DOUBLE,
DOUBLE ARCH TOP,
SIDELITE DOOR
SIZES: 6/8, 8/0

MISCELLANEOUS

DENTIL SHELF KIT: SPECIES: SAPELE, MERANTI
DOOR: 1/0-3/0-1/0 CRAFTSMAN

1" X 4" EXTERIOR TRIM: SPECIES: SAPELE, MERANTI,
OKOUME, KNOTTY ALDER
DOOR: 8/0 SQUARE, 8/0 ARCH

SPEAKEASY KIT: SPECIES: KNOTTY ALDER

HINGE STRAPS: TYPE: FORGED IRON
DOOR: KNOTTY ALDER

IRON GRILLE: TYPE: FORGED IRON
DOOR: KNOTTY ALDER WITH
SPEAKEASY

CLAVOS SET: TYPE: FORGED IRON
DOOR: KNOTTY ALDER WITH
SPEAKEASY





Napa Door

RESIDENTIAL DOOR SYSTEMS

4403 Delp Street

Memphis, TN 38118

(ph) 901-794-0071

(fx) 901-794-0120

www.napadoor.com

info@napadoor.com